

Improving Student Learning for Catholic Schools

Appendix A-1 School Profile – Basic Information

<u>All Saints Catholic School</u>	<u>Preschool – 6th Grade</u>	<u>(208) 743-4411</u>
School Name	Grades	School Phone
<u>641 5th Ave.</u>	<u>Lewiston</u>	<u>Idaho 83501</u>
Address	City	State Zip
<u>Denise Hammrich</u>	<u>dhammrich@ascs-pk6.org</u>	<u>(509) 243-4605</u>
Principal	E-mail Address	Home Phone
<u>Fr. Les Kish</u>	<u>Lewiston Independent School District No. 1</u>	
Pastor	Public School District	

Not Applicable Not Applicable
 Director of Education for Religious Community in School Religious Community

Does your school have a school board? Yes No
 If yes, is it an advisory body or a governing body? Advisory Governing

Who is the Chair / President? Marilyn Blake

Do you have a Preschool Program? Yes No

What are the hours of operation? 8:30 AM – 2:30 PM

What are the fees?

2 days per week – ½ day - 8:30 AM – 12:00 Noon	\$900 per year
3 days per week – ½ day - 8:30 AM – 12:00 Noon	\$1300 per year
3 days per week – full day - 8:30 AM – 2:30 PM	\$3640 per year
5 days per week – ½ day - 8:30 AM – 12:00 Noon	\$2080 per year
5 days per week – full day - 8:30 AM – 2:30 PM	\$4680 per year

How many families participate? 31

For which grades do you have waiting lists? At this time we do not have waiting lists.

Do you have an approved Technology Plan? Yes No

Improving Student Learning for Catholic Schools

Appendix A-2 School Profile – Current Enrollment Information

	Male	Female	Total
Preschool	20	11	31
K	6	10	16
1	17	7	24
2	6	9	15
3	7	13	20
4	6	8	14
5	10	13	23
6	7	9	16
7	0	0	0
8	0	0	0
Total	71	82	159

	Catholic	Non-Catholic	Total
Black	0	0	0
Hispanic	3	0	3
Asian	0	0	0
Hawai'ian / Pacific Islander	1	3	4
Native American / Native Alaskan	5	2	7
White	100	44	144
Other	1	0	1
Total	110	49	159

School Year	Number of Graduates Boys / Girls	Number applying to Catholic high schools Boys / Girls	Number accepted by Catholic high schools Boys / Girls
2006	13 / 6	There is no Catholic High School in Lewiston	
2007	12 / 12		
2008	10 / 6		
2009	9 / 12		
2010	7 / 13		

Improving Student Learning for Catholic Schools

Appendix A-3 School Profile – Instructional (Teaching) Staff

Name	Grade Subj.	Catholic	Highest Degree	Teacher License	Catechist Cert.	Total Yrs. Exp.	Exp. this school	Ethnicity	M/F
Karra Allen	PreK, ASAP	No	B.S.	Yes	No	3	3	Caucasian	F
Kelly Aitken	1 st Grade Aide	No	B.S.	Yes	No	1	1	Caucasian	F
Vanessa Botts	Spanish	Yes	B.S.	Yes	No	8	2 mo.	Latino	F
Ben Bross	Music, Band, Choir	Yes	H.S. +	No	No	11	11	Caucasian	M
Karen Edmundson	2	Yes	B.A. +	Yes	Yes	26	25	Caucasian	F
Sandy Gossage	1	No	B.S. +	Yes	Yes	10	10	Caucasian	F
Denise Hammrich	Principal	Yes	Ed.S.	Yes	Yes	19	19	Caucasian	F
Cindy Heard	Title 1/ Asst. Teacher	Yes	B.A.+	Yes	No	15	11	Caucasian	F
Catherine Holthaus	4	Yes	B.S. +	Yes	Yes	3	3	Caucasian	F
Tina Jackson	3	Yes	B.S. +	Yes	Yes	10	10	Caucasian	F
Tonia Jones	6	Yes	B.S. +	Yes	Yes	10	10	Caucasian	F
Tina Madden	K	Yes	B.S. +	Yes	Yes	12	12	Caucasian	F
Amanda Remacle	PreK	No	B.S. +	Yes	Working	5	3	Caucasian	F
Stogy Sandahl	P.E.	Yes	B.S.	Yes	No	10	10	Caucasian	M
Lorene Uptmor	5	Yes	B.S. +	Yes	Yes	40	36	Caucasian	F

Improving Student Learning for Catholic Schools

Appendix A-4

Adhere to Diocesan Policy in publishing this appendix

School Profile – Support (non-teaching) Staff

Name	Assignment	Hours per day Worked	Days per year worked	Years worked at this school	Qualifications (degree, certification, etc.)
Jill Albright	Kitchen Assistant	4	167	5	
Tamara Arrasmith	Kindergarten Aide, Lunch Duty, ASAP	9	167	2	
Jim Carlson	Bus Driver	3	167	2	CDL License
Julie DeBarbrie	Office Manager	8	190	13	
Jean Jorgenson	Bookkeeper	8	190	7	
Ernie Kaufman	Head Cook	6.5	177	25	
Barb Mann	Custodian	7	240	13	
Cindy Stellmon	Librarian	7.5	125	15	

Improving Student Learning for Catholic Schools

Appendix A-5 School Profile – Participation in IDEA

Under the Individuals with Disabilities Education Act (IDEA), Local Education Agencies (LEAs) are responsible for locating, identifying, evaluating (“child find”) and developing an individual education program (IEP) for any child living within the district’s boundaries, including children enrolled in private and religious schools, who may have a disability (e.g., hearing, speech, sight, physical and mental impairments; emotional disturbances and learning disabilities, etc.) at no cost to the child’s parents.

Child find is a component of IDEA that requires states to identify, locate, and evaluate all children with disabilities, aged birth to 21, who are in need of early intervention or special education services.

1. Has your LEA carried out this “child find” requirement in your school? Yes ___ No
2. If yes, how many children were actually identified as having a disability? 4
3. If No, have you ever requested the LEA to do a “child find?”
and had that request denied? ___ Yes ___ No
4. Of those children identified with a disability, how many have
had a formal Instructional Service Plan (ISP) developed by the LEA? 4
5. Of those children currently enrolled in your school and having an ISP with specified services
identified, how many are receiving?
NO specified services _____ SOME specified services _____ All Specified services
4
6. Of those children with disabilities currently enrolled in your school, how many are receiving
the specified services in your school? 2
7. How many are receiving those services at a public school or neutral site? 2
8. For those receiving services at a public school or a neutral site,
is transportation being provided at no cost to the child’s parents? Yes (for 1 child) ___
No
9. How many of the children identified as eligible for services through ‘child find’ transferred
to the public school? 0
10. How many of the children identified eligible for services through ‘child find’ chose to remain
in your school and forego receiving the specified services? 0
11. How many children with disabilities, who applied to your school within the past three years,
were unable to attend because your school does not offer services that meet their specific
needs? 0

California schools only: note that California Ed Code 48203 (SB 1327) lists specific reporting requirements of California schools to the County/District Superintendent regarding issue addressed in question #11.

Improving Student Learning for Catholic Schools

Appendix A-6 School Profile – Participation in Federal Programs

Title I, Part A – Improving the Academic Achievement of the Disadvantaged

1. How many students are eligible for Title IA services? 14
2. How many students are receiving Title IA services? 12
3. What services are being offered at your school for Title IA students?
 - Professional Development for Teachers
 - Accelerated Math
 - Supplemental Resource Teacher

Title II, Part A – Teacher and Principal Training and Recruiting Fund

1. What is your per-pupil allocation for Title IIA services? \$52.21 per child.
2. What is your total Title IIA allocation for School Year 2009 - 2010? \$731
3. Have you developed/filed an approved Title IIA Staff Development plan? ___ Yes X No
4. Attach a copy of your staff development plan to this section.
5. If you don't have a staff development plan, describe the staff development in-services you will be requesting.

Title IIA funds were requested for administrative professional development. The principal attended the Intermountain Catholic School Consortium that addressed continuous improvement activities that included meeting the needs of all learners and helping teachers through teacher evaluations.

Title II, Part D – Enhancing Education Through Technology

1. What is your per-pupil allocation for Title IID services? \$0.00 per child.
2. What is your total Title IID allocation for School Year 2009 - 2010? \$0.00
3. How will you be using these resources? Not Applicable

Appendix A-6 Continued
School Profile – Participation in Federal Programs

Title III, Part A – English Language Acquisition, Language Enhancement and Academic Achievement

1. Are you using any funds/services for Title III for your students? ___ Yes X No
2. If Yes, please describe the services that you provide/are provided.

Title IV, Part A – Safe and Drug-Free Schools and Communities

1. What is your per-pupil allocation for Title IVA services? \$300 / flat rate.
2. What is your total Title IVA allocation for School Year 2009 - 2010? \$300
3. How are you using these funds?

These funds are used to supplement our character education program.

Title IV, Part B – 21st Century Community Learning Centers

1. Is your LEA participating in this program? ___ Yes X No
2. How many students do you have that are a part of the target population for this program? ___
3. Describe the services that are provided for your target population.

Improving Student Learning for Catholic Schools

Appendix A-7 School Profile – Standardized Testing Program

St. Stanislaus Tri-Parish School, Lewiston – M.A.P. Proficiency (Spring 2007)

Reading		8th	7th	6 th	5 th	4 th	3 rd	2 nd	Totals
Students	Tested			24	19	24	20	22	109
56%	Adv.			9	11	17	9	15	61
39%	Pro			14	7	7	8	7	43
2%	Basic			1	1	0	0	0	2
3%	BB			0	0	0	3	0	3
Math									
Students	Tested			24	19	24	20	22	109
43%	Adv			11	10	15	8	3	47
45%	Pro			10	6	9	8	16	49
10%	Basic			2	2	0	4	3	11
2%	BB			1	1	0	0	0	2
Language									
Students	Tested			24	19	24	20	22	109
53%	Adv			10	11	13	11	13	58
41%	Pro			13	6	11	7	8	45
4%	Basic			1	2	0	0	1	4
2%	BB			0	0	0	2	0	2

Proficient and Advanced:

Reading	95%
Math	88%
Language	94%

Appendix A-7 Continued
School Profile – Standardized Testing Program

St. Stanislaus Tri-Parish School, Lewiston – M.A.P. Proficiency - Spring 2008

Reading		8th	7th	6 th	5 th	4 th	3 rd	2 nd	Totals
Students	Tested			14	23	20	18		75
53%	Adv.			8	11	13	8		40
46%	Pro			6	12	7	9		34
0%	Basic			0	0	0	0		0
1%	BB			0	0	0	1		1
Math				236.7	220.3	216.8	203.9		
Students	Tested			14	23	20	17		74
49%	Adv			11	8	9	8		36
43%	Pro			3	12	10	7		32
4%	Basic			0	1	1	1		3
4%	BB			0	2	0	1		3
Language				226.4	221.0	215.3	205.9		
Students	Tested			14	23	20	18		75
56%	Adv			9	10	12	11		42
35%	Pro			4	11	7	4		26
8%	Basic			1	2	1	2		6
1%	BB			0	0	0	1		1

Proficient and Advanced:

Reading	99%
Math	92%
Language	91%

Appendix A-7 Continued
School Profile – Standardized Testing Program

All Saints School (St. Stanislaus), Lewiston – M.A.P. Proficiency – Spring 2009

Reading		8th	7th	6th	5 th	4th	3rd	2nd	Totals
Students	Tested			19	19	16	22		76
53%	Adv.			14	8	6	12		40
43%	Pro			5	10	9	9		33
1%	Basic			0	0	1	0		1
3%	BB			0	1	0	1		2
Math									
Students	Tested			19	19	16	21		75
59%	Adv			16	9	6	13		44
33%	Pro			2	8	8	7		25
8%	Basic			1	2	1	2		6
1%	BB			0	0	1	0		1
Language									
Students	Tested			19	19	16	22		76
51%	Adv			11	8	6	14		39
44%	Pro			8	9	9	7		33
4%	Basic			0	2	0	1		3
1%	BB			0	0	1	0		1

Proficient and Advanced:

Reading	96%
Math	91%
Language	95%

Appendix A-7 Continued
School Profile – Standardized Testing Program

All Saints Catholic School, Lewiston – M.A.P. Proficiency - Spring 2010

Reading		8th	7th	6 th	5 th	4 th	3 rd	2nd	Totals
Students	Tested			20	15	21	14		70
57%	Adv.			16	7	11	6		40
39%	Pro			4	8	8	7		27
4%	Basic			0	0	2	1		3
0	BB			0	0	0	0		0
Math									
Students	Tested			20	15	21	14		70
60%	Adv			13	7	14	8		42
31%	Pro			7	4	6	5		22
7%	Basic			0	3	1	1		5
2%	BB			0	1	0	0		1
Language									
Students	Tested			20	15	21	14		70
62%	Adv			11	8	15	9		43
34%	Pro			8	6	5	5		24
4%	Basic			1	1	1	0		3
0	BB			0	0	0	0		0

Proficient and Advanced:

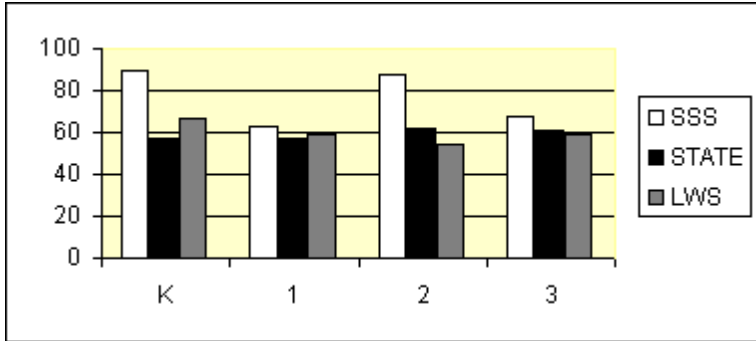
Reading	96%
Math	91%
Language	96%

Appendix A-7 Continued School Profile – Standardized Testing Program

IRI FALL 2007-08
% AT GRADE LEVEL

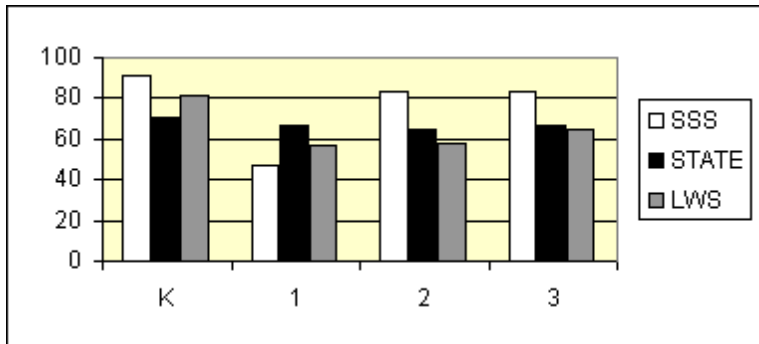
IRI - First Year of New Version with AIMSWEB

	<u>SSS</u>	<u>STATE</u>	<u>LWS</u>
K	90	57	67
1	63	57	59
2	88	62	54
3	68	61	59



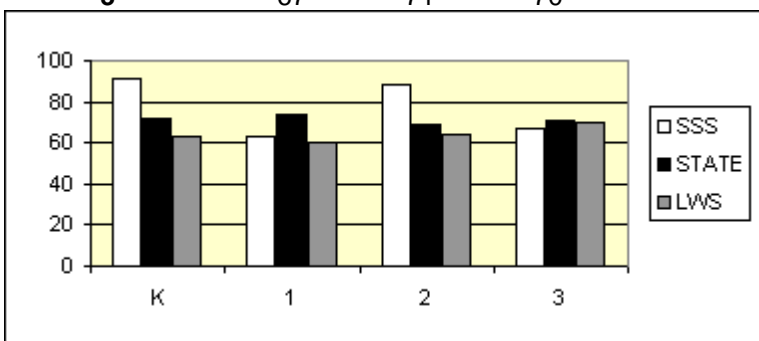
IRI WINTER 2007-08
% AT GRADE LEVEL

	<u>SSS</u>	<u>STATE</u>	<u>LWS</u>
K	91	71	81
1	47	67	57
2	83	65	58
3	83	67	65



IRI SPRING 2007-08
% AT GRADE LEVEL

	<u>SSS</u>	<u>STATE</u>	<u>LWS</u>
K	91	72	63
1	63	74	60
2	88	69	64
3	67	71	70

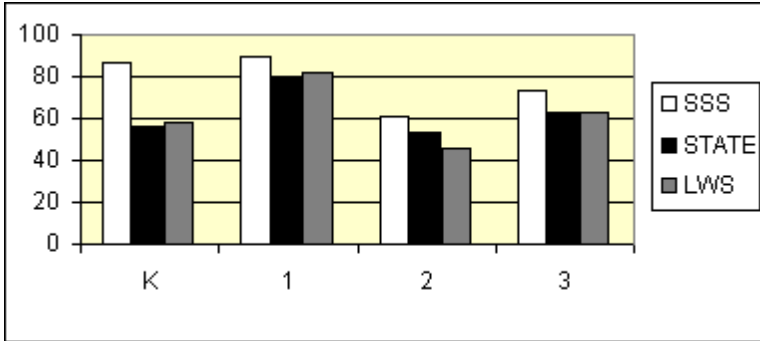


Appendix A-7 Continued School Profile – Standardized Testing Program

IRI - Second Year with
AIMSWEB

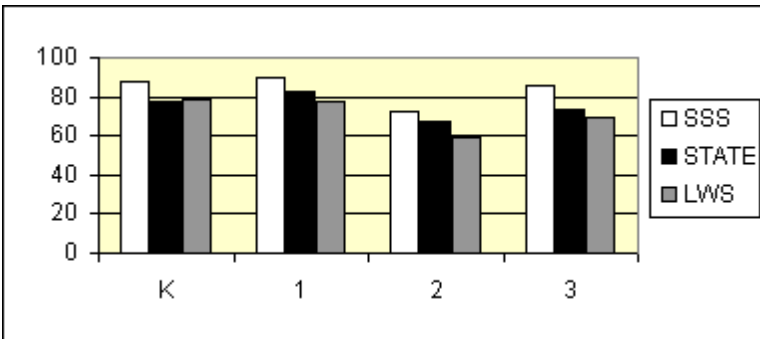
IRI FALL 2008-09
% AT GRADE LEVEL

	<u>SSS</u>	<u>STATE</u>	<u>LWS</u>
K	87	56	58
1	90	80	82
2	61	53	46
3	73	63	63



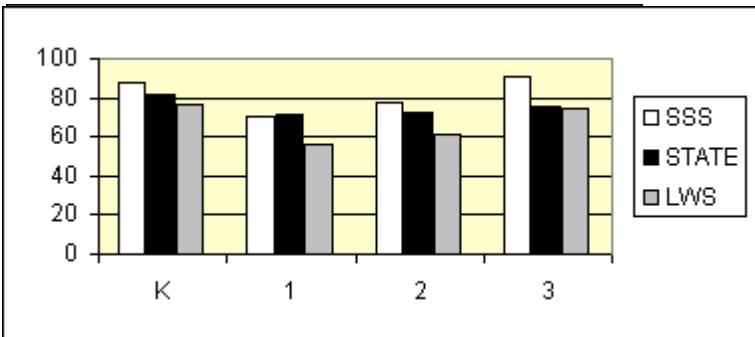
IRI WINTER 2008-09
% AT GRADE LEVEL

	<u>SSS</u>	<u>STATE</u>	<u>LWS</u>
K	88	78	79
1	90	83	78
2	72	67	59
3	86	73	69



IRI SPRING 2008-09
% AT GRADE LEVEL

	<u>SSS</u>	<u>STATE</u>	<u>LWS</u>
K	88	82	77
1	70	71	56
2	78	72	61
3	91	76	74

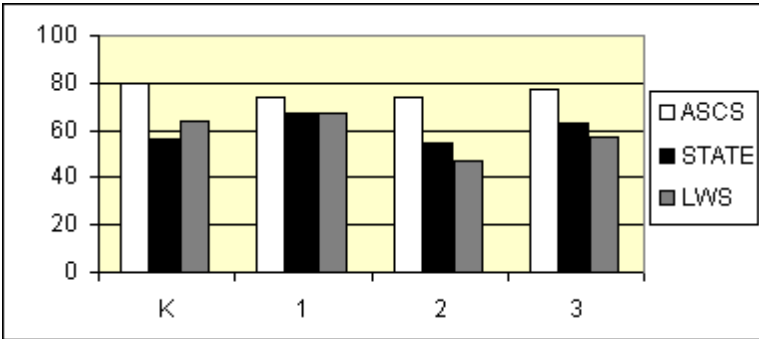


Appendix A-7 Continued School Profile – Standardized Testing Program

IRI - Third Year with
AIMSWEB

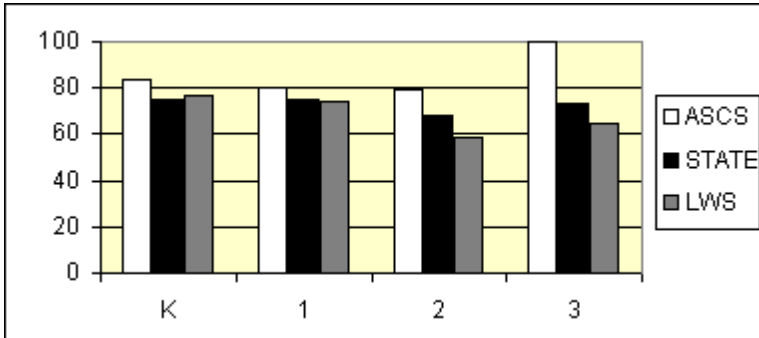
IRI FALL 2009-10
% At Benchmark (formerly At Grade Level)

	<u>ASCS</u>	<u>STATE</u>	<u>LWS</u>
K	80	56	64
1	74	67	67
2	74	55	47
3	77	63	57



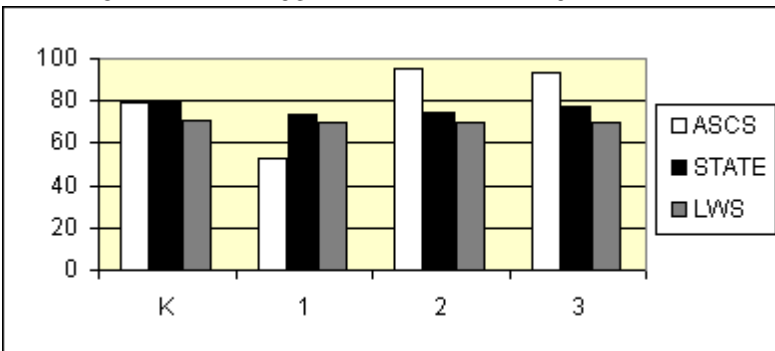
IRI WINTER 2009-10
% At Benchmark

	<u>ASCS</u>	<u>STATE</u>	<u>LWS</u>
K	84	75	77
1	80	75	74
2	79	68	59
3	100	73	65



IRI SPRING 2009-10
% At Benchmark

	<u>ASCS</u>	<u>STATE</u>	<u>LWS</u>
K	79	80	71
1	53	74	70
2	95	75	70
3	93	77	70



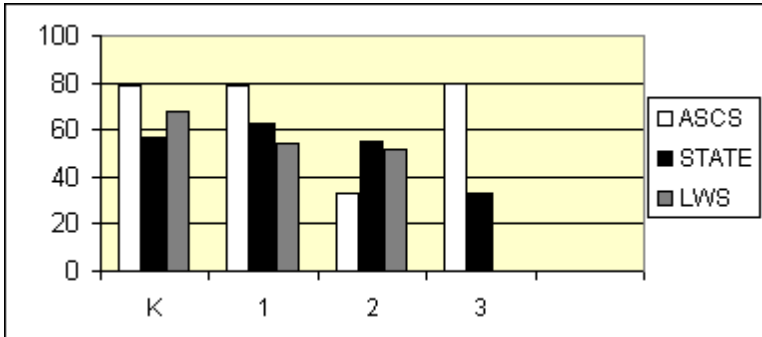
Appendix A-7 Continued School Profile – Standardized Testing Program

IRI FALL 2010-11

IRI - Fourth Year
with AIMSWEB

% At Benchmark (formerly At Grade Level)

	<u>ASCS</u>	<u>STATE</u>	<u>LWS</u>
K	79	57	68
1	79	63	54
2	33	55	52
3	80	33	0



Improving Student Learning for Catholic Schools

Appendix A-8 School Profile – Staff Development Program

In the following section, outline your staff development plans. Usually, a professional development focus will run for several years, be associated with In-Depth Studies, involve the entire faculty, be connected with your Action Plan, and have an impact on improving student learning.

Staff Development for 2007 - 2008: Theme: Literacy and Leadership

Activities/Cost: The Learning Network (Consultation and Classroom Visits)	\$4,935
Catholic Leadership Conference	\$1,100

Staff Development for 2008 – 2009: Theme: Math Instruction

Activities/Cost: Monthly consultation and classroom visits with math consultant. \$2,300

Staff Development for 2009 - 2010: Theme: Improving Math Instruction and the Collection of Evidence of Learning

Activities/Cost: Monthly consultation and classroom visits with math consultant.	\$2,250
Partnership in Education Conference	\$ 440
Catholic School Administrative Consortium	\$ 650

Staff Development for Current School Year: Theme: Differentiating Math Instruction

Activities/Cost: Monthly consultation and classroom visits with math consultant.	\$2,250
Partnership in Education Conference	\$ 620

Improving Student Learning for Catholic Schools

Appendix B-1

Data Analysis – Enrollment Trends Grade Enrollment Over Time

Year	Preschool	K	1	2	3	4	5	6
2000	0	25	18	25	23	21	21	19
2001	0	20	27	19	25	22	21	20
2002	0	22	21	25	17	26	19	22
2003	21	22	24	19	27	17	28	18
2004	24	20	22	25	17	27	17	27
2005	23	25	21	21	25	19	24	20
2006	20	20	25	22	20	25	19	25
2007	27	22	19	25	19	20	23	16
2008	29	16	21	18	22	17	19	20
2009	24	25	15	19	14	21	15	20
Current	31	16	24	15	20	14	23	16

Total Enrollment Over Time

	2000	2001	2002	2003	2004	2005	2006	2007	2008	2009	Current
PreK	0	0	0	21	24	23	20	27	29	27	31
K-6	152	154	152	155	155	155	156	144	133	129	128
Total	152	154	152	176	179	178	176	171	162	153	159

Improving Student Learning for Catholic Schools

Appendix B-2 Finances

Per Pupil Cost Over Time

Year	2004	2005	2006	2007	2008	2009	Current Year
Amount	\$6,015	\$6,309	\$6,834	\$7,661	\$8,302	\$8,502	\$8,672
% Increase	5%	5%	8%	11%	8%	3%	2%

First Child's Tuition Over Time (Includes Registration Fee)

Year	2004	2005	2006	2007	2008	2009	Current Year
Amount	\$2410	\$2467	\$2680	\$2855	\$2990	\$3055	\$3115
% Increase	3%	3%	8%	7%	5%	2%	2%

Tuition as a % of Per Pupil Cost

Year	2004	2005	2006	2007	2008	2009	Current Year
%	40%	39%	39%	37%	36%	35%	34%

Budget Surplus/Deficit (Bottom Line)

Year	2004-2005	2005-2006	2006-2007	2007-2008	2008-2009	2009-2010	Current Year
\$	1,377	(8,485)	13,971	(97,168)	(27,741)	1,626	924

Improving Student Learning for Catholic Schools

Appendix B-3

Analysis of Test Results: Comparison with Diocesan Data

Comparison to Diocesan Data

Measures of Academic Progress (MAP) Assessment

Spring 2010	Grade 3		Grade 4		Grade 5		Grade 6	
	ASCS	Diocese	ASCS	Diocese	ASCS	Diocese	ASCS	Diocese
Reading	205.7	206.5	213.7	214.6	219.6	220.4	227.1	226.1
Math	204.5	208.7	216.9	219.7	218.9	228.3	228.5	226.2
Language	207.8	208.4	216.2	215.2	220.6	221.8	227.1	226.1

Fall 2010	Grade 3		Grade 4		Grade 5		Grade 6	
	ASCS	Diocese	ASCS	Diocese	ASCS	Diocese	ASCS	Diocese
Reading	196.7	199.4	205.7	205.3	215	214.5	218.6	221.0
Math	196.8	197.8	206.9	207.7	210.1	218.0	225.2	229.0
Language	200.5	199.9	208.1	209.3	214.3	216.2	220.0	221.2

Improving Student Learning for Catholic Schools

Appendix B-4 Analysis of Test Results: Curricular Areas Over Time

In the spaces below are the number of students in each grade who scored at or below the 25th percentile on the spring MAP assessment.

Reading

Year	Test/Sub-Test	3	4	5	6
	Reading Comprehension				
	Decoding & Vocabulary				
2007		4	3	3	5
2008	*RIT cut scores changed	2	0	0	0
2009		1	0	1	0
Current		1	2	0	1

Year	Test/Sub-Test	3	4	5	6
	Reading Comprehension				
	Comprehending Text				
20__					
2005					
2006					
2007		5	3	1	3
2008	*RIT cut scores changed	1	0	0	0
2009		1	0	0	0
Current		0	1	0	0

Year	Test/Sub-Test	3	4	5	6
	Reading Comprehension				
	Expository Text				
2007		4	2	3	5
2008	*RIT cut scores changed	1	0	1	0
2009		1	0	1	0
Current		1	1	0	0

Year	Test/Sub-Test	3	4	5	6
	Reading Comprehension				
	Literary Text				
2007		3	0	2	4
2008	*RIT cut scores changed	1	0	0	0
2009		1	0	1	0
Current		1	2	0	0

Appendix B-4 Continued
Analysis of Test Results: Curricular Areas Over Time

Mathematics

Year	Test/Sub-Test	3	4	5	6
	Mathematics				
	Number & Operation				
2006		2	0	4	3
2007		10	3	3	2
2008	*RIT cut scores changed	3	3	2	1
2009		4	4	2	1
Current		3	3	3	0

Year	Test/Sub-Test	3	4	5	6
	Mathematics				
	Measurement				
2006		2	2	6	3
2007		10	5	3	7
2008	*RIT cut scores changed	1	3	4	1
2009		3	3	2	1
Current		2	2	3	0

Year	Test/Sub-Test	3	4	5	6
	Mathematics				
	Algebra & Functions				
2006		5	0	4	2
2007		6	2	4	2
2008	*RIT cut scores changed	4	2	3	1
2009		3	2	1	1
Current		1	3	3	1

Year	Test/Sub-Test	3	4	5	6
	Mathematics				
	Geometry				
20__					
2005					
2006		9	0	4	2
2007		10	4	4	4
2008	*RIT cut scores changed	3	1	3	0
2009		3	1	2	1
Current		3	1	1	1

Appendix B-4 Continued
Analysis of Test Results: Curricular Areas Over Time

Year	Test/Sub-Test	3	4	5	6
	Mathematics				
	Data Analysis & Probability				
20__					
2005					
2006		3	1	4	2
2007		6	9	4	5
2008	*RIT cut scores changed	3	0	3	2
2009		1	2	2	0
Current		2	2	2	1

In the spaces below are the number of students in each grade who scored at or below the 25th percentile on the spring 2010 MAP assessment. The weakest areas of performance for those who scored at or below the 25th percentile are listed below each content area.

Spring 2010 (MAP)

Reading Proficiency

Grade	3	4	5	6	School %
Advanced	6	11	7	16	57
Proficient	7	8	8	4	39
Basic	1	2	0	0	4
Below Basic	0	0	0	0	0
Total	14	21	15	20	100

Weakest Areas of Performance

Grade	
3	Expository Text
4	Expository Text, Literary Text
5	N/A
6	N/A

Appendix B-4 Continued
Analysis of Test Results: Curricular Areas Over Time

Math Proficiency

Grade	3	4	5	6	School %
Advanced	8	14	7	13	60
Proficient	5	6	4	7	31
Basic	1	1	3	0	7
Below Basic	0	0	1	0	2
Total	14	21	15	20	100

Weakest Areas of Performance

Grade	
3	Number & Operations
4	Number & Operations, Measurement
5	Geometry, Number & Operations, Measurement
6	N/A

Language Proficiency

Grade	3	4	5	6	School %
Advanced	9	15	8	11	62
Proficient	5	5	6	8	34
Basic	0	1	1	1	4
Below Basic	0	0	0	0	0
Total	14	21	15	20	100

Weakest Areas of Performance

Grade	
3	N/A
4	N/A
5	N/A
6	N/A

Appendix B-4 Continued

Analysis of Test Results: Curricular Areas Over Time

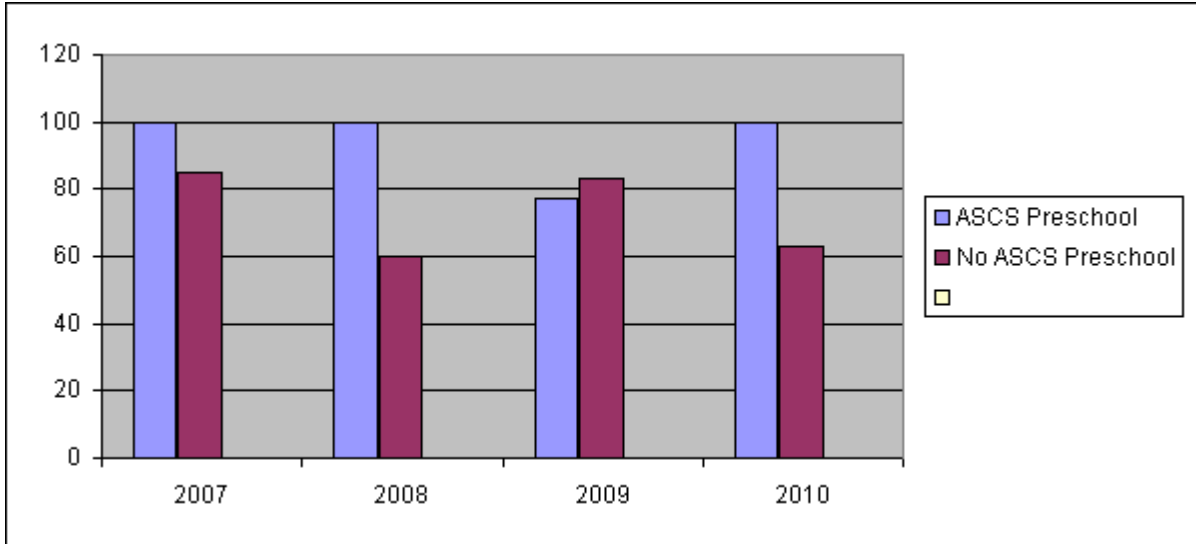
Direct Math Assessment (DMA) - Percentage of Students Proficient or Above										
<p>The Direct Math Assessment (DMA) is an Idaho State assessment administered to students in grades 4, 6 and 8. The DMA is given to all students in the state of Idaho on an assigned date at the end of November or beginning of December. The DMA is composed of five multistep story problems. In the years 02-08 students select four of the five problems to solve. *In 08-09 students were expected to solve all five of the story problems. The DMA tests are scored by a panel of teachers selected by the Idaho State Education Department. Student written work is scored based on problem solving skills, mathematical reasoning, as well as, finding the correct answer.</p>										
	05-06		06-07		07-08		08-09 *New Test		09-10	
Grade Tested	ASCS	ID	ASCS	ID	ASCS	ID	ASCS	ID	ASCS	ID
Grade 4	94%	73%	92%	68%	85%	61%	53%	56%	74%	64%
Grade 6	83%	54%	69%	45%	86%	45%	80%	46%	89%	52%

Direct Writing Assessment (DWA) - Percentage of Students Proficient or Above										
<p>The Direct Writing Assessment (DWA) is an Idaho State assessment administered to students in grades 5 and 7. The DWA is given to all students in the state of Idaho on an assigned date at the end of November or beginning of December. The DWA is composed of one writing prompt. Students are asked to compose an essay based on that writing prompt. Students are given 90 minutes to go through the writing process from a draft to a finished essay. Finished essays are scored by a panel of teachers selected by the Idaho State Education Department.</p>										
	05-06		06-07		07-08		08-09		09-10	
Grade Tested	ASCS	ID	ASCS	ID	ASCS	ID	ASCS	ID	ASCS	ID
Grade 5	83%	72%	88%	74%	95%	61%	84%	70%	93%	69%

Appendix B-4 Continued
Analysis of Test Results: Curricular Areas Over Time

All Saints Catholic School
Fall IRI
% at Benchmark

	<u>ASCS Preschool</u>	<u>No ASCS Preschool</u>
2007	100	85
2008	100	60
2009	77	83
2010	100	63



Improving Student Learning for Catholic Schools

Appendix B-5 Analysis of Disaggregate Test Results

Number of boys and girls in each grade who scored in the bottom quartile on the spring Measures of Academic Progress (MAP) assessment in Mathematics.

Subject A ~ Girls B ~ Boys	3A	3B	4A	4B	5A	5B	6A	6B
2006	0	0	0	0	3	0	1	0
2007	1	3	0	0	1	1	1	0
2008	1	2	1	0	1	1	0	0
2009	3	1	1	1	1	1	1	0
Current	0	2	1	0	3	0	0	0

**Appendix B-5 Continued
Analysis of Disaggregate Test Results**

All Saints Catholic School
Fall 2010

Class Report by RIT
Disaggregated by Gender

	Grade	Reading	Math	Language
	3			
Boys		187.9	195.7	190.7
Girls		201.4	197.3	205.7
All		196.7	196.8	200.5
	4			
Boys		203.3	206.0	205.1
Girls		207.5	207.8	210.3
All		205.7	206.9	208.1
	5			
Boys		214.9	211.4	212.5
Girls		215.0	209.2	215.6
All		215.0	210.1	214.3
	6			
Boys		217.6	230.0	219.7
Girls		219.1	226.5	220.2
All		218.6	225.2	220.0
Grade 5 Science:		Concepts	General	
Boys		204.1	208.4	
Girls		200.8	199.2	
All		202.3	203.2	